

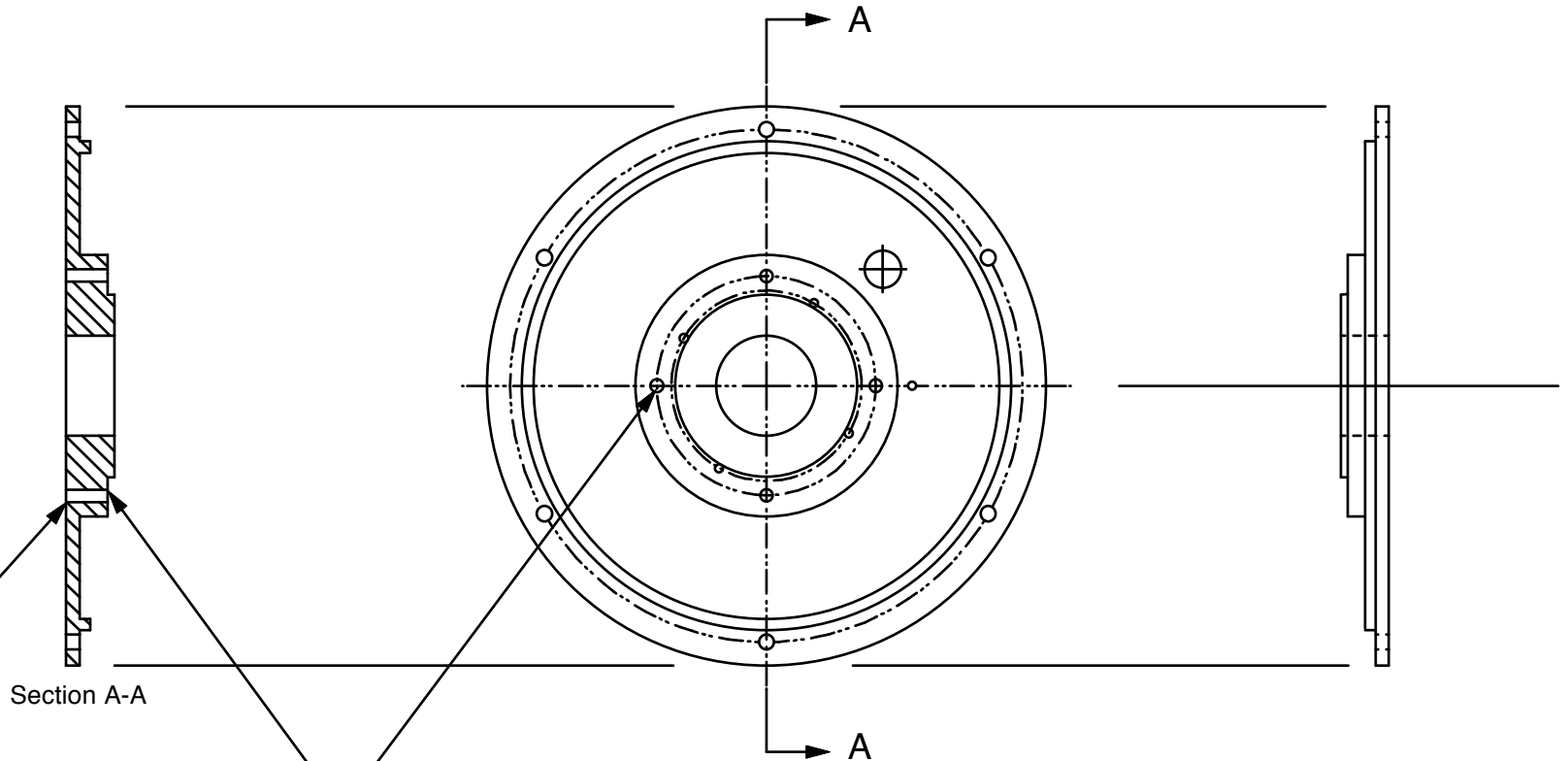
The information disclosed herein is the property of the originator who reserves all patent, design, proprietary, manufacturing, use and sales rights thereto, except for the rights expressly granted to others. This document shall not be reproduced nor shall the information contained within be used by or disclosed to others except as expressly authorized by the originator. ©

Revision  
Letter

Change  
Description

A

Changed 8-32 Tap Holes  
(Qty 4) to be Thru Holes



Note: Once installed,  
Alternator Mount Screws  
MUST NOT Protrude out  
the back side of the plate.

Drill #29 Thru.  
TAP 8-32 THRU  
TYP. 4 PLACES  
From this Side  
(Fwd side as installed on  
Engine)

**Sonex Aircraft, LLC**

**Alternator Mount Plate  
Modification Drawing**

Drawing Scale

1:2

Drawing Number

ACV-A01-13

Revision

A