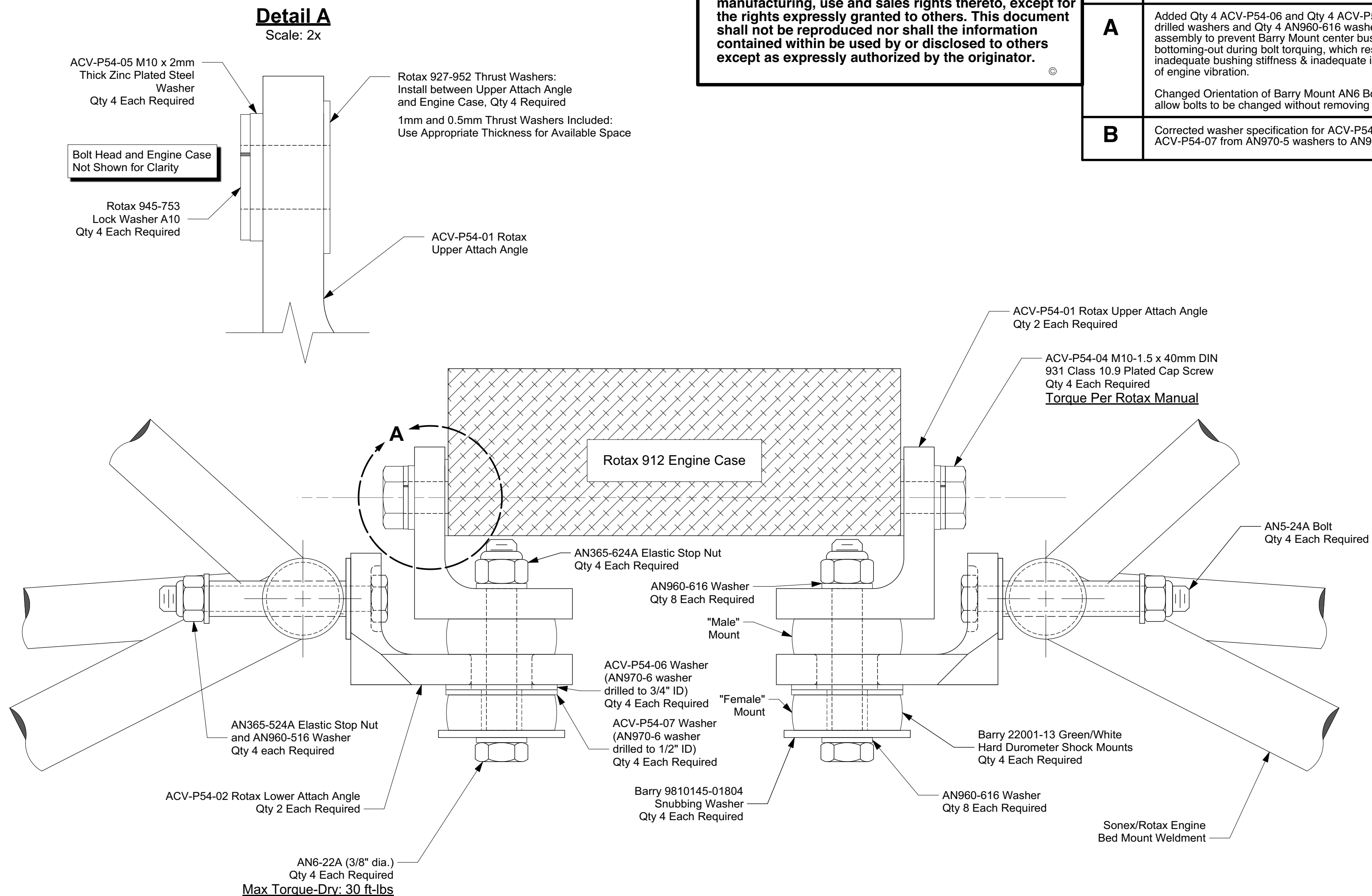


The information disclosed herein is the property of the originator who reserves all patent, design, proprietary, manufacturing, use and sales rights thereto, except for the rights expressly granted to others. This document shall not be reproduced nor shall the information contained within be used by or disclosed to others except as expressly authorized by the originator. ©

Revision Letter	Change Description	Date
A	Added Qty 4 ACV-P54-06 and Qty 4 ACV-P54-07 drilled washers and Qty 4 AN960-616 washers to assembly to prevent Barry Mount center bushings from bottoming-out during bolt torquing, which results in inadequate bushing stiffness & inadequate isolation of engine vibration. Changed Orientation of Barry Mount AN6 Bolts to allow bolts to be changed without removing engine.	10/04/22
B	Corrected washer specification for ACV-P54-06 and ACV-P54-07 from AN970-5 washers to AN970-6.	08/29/23



Assembly Sequence:

- Install ACV-P54-02 Rotax Lower Attach Angles to Engine Mount Weldment.
NOTES:
 - Lower Attach Angles may be bushed with 5/16" OD x .035" Wall Aluminum Bushing Stock for use with engine mount weldments equipped with AN4 mounting pins.
 - Assembly may be lightly reamed and bolts may be turned and lightly tapped into welded mount pins.
- Install ACV-P54-01 Rotax Upper Attach Angles and Barry Mounts to ACV-P54-02 Lower Attach Angles.
NOTE: A light coat of water-soluble lubricant such as mild dish soap may be used to install "Male" Barry Mount halves into ACV-P54-02 Rotax Lower Attach Angles.
- Install Engine to ACV-P54-01 Rotax Upper Attach Angles.

AeroConversions Rotax Engine Mount Attach Kit Installation Instructions		
Drawing Scale FULL & Noted	Drawing Number ACV-P54-Kit	Revision B